

Imagine.



# ***VersaCAMM***

*Print & Cut* **VS-640i / VS-540i / VS-300i**

# BEYOND IMAGINATION

Versatile performance that powers your imagination

VersaCAMM, the most popular wide-format inkjet printer for sign and durable graphics users around the world, has been reborn with superior performance to meet the growing needs of sign and graphics professionals. The versatile VersaCAMM VS-i series features the new high-density ECO-SOL MAX2 ink available in CMYKLcLm, White, Metallic and Light Black, a range of usability enhancements to improve ease of use, world leading integrated contour cutting, and of course, exceptional print quality. Go beyond your imagination and turn your ideas into reality with the exceptional quality and greater versatility of the new VersaCAMM VS-i.









# QUALITY

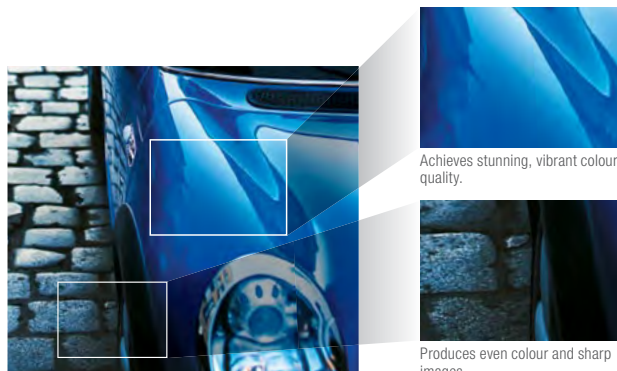
## Exceptional print quality befitting a high-end machine

The VersaCAMM VS-i series delivers the level of print quality sought by sign and graphics professionals. It is equipped with the latest high performance print head, which fires droplets of seven different sizes to optimise image quality for the specific media and print resolutions selected. The VS-i achieves incredibly high resolution rivaling that of high-end machines thanks to precise head control, which maximises the potential of the print head and ink. Enlarge your print business and make more profit with vibrant, colourful and detailed results from the VersaCAMM VS-i series.



## ECO-SOL MAX2 delivers incredibly sharp image quality

ECO-SOL MAX2 is a new generation of Roland's award-winning eco-solvent ink, featuring outstanding long-term outdoor durability, scratch and chemical resistance, broad media support and a wide colour gamut – all with no nickel compounds. ECO-SOL MAX2 is engineered for stable, consistent output, and produces vibrant colours with sharp images and text. These enhancements bring out every detail for the highest print quality.



# MONOCHROME

## Monochrome printing with excellent grey balance

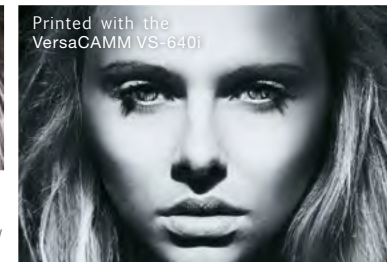


VersaCAMM VS-i supports the new light black (Lk) ECO-SOL MAX2 ink, providing highly accurate colours and seamless gradations. With light black, you can achieve a neutral grey for smooth grey scale gradations and precise photographic images, or produce natural, smooth reproduction of skin tones containing light and medium hues. Light black also assists with accurate colour reproduction for corporate branding material, such as clothing or cosmetics promotions.



Printed with the VersaCAMM VS-640

Accurate grey balance and remarkably smooth skin tones

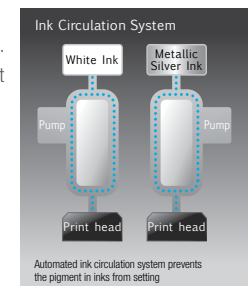


# WHITE & METALLIC

## White and metallic printing produces profitable new applications



The standard mode of the new VS-i series can match the image quality of its predecessor's high quality mode\*, achieving approximately 1.5 times faster production speed for printing with white. Vibrant full colour prints are possible not only with transparent film but also for deep colour elements, thanks to the increased density of the new white ink. In standard mode, the new metallic ink also makes it possible for the VS-i to reproduce the image density of the previous models' high quality mode\*, while delivering approximately 2 times faster production speed.



\* VersaCAMM VS-640/540/300

# PRINT & CUT

## Cut any shape with advanced Print & Cut technology

The VS-i series features Roland's renowned Print & Cut technology, which prints and automatically contour cuts images into any shape in one seamless workflow. This enables the production of versatile applications ranging from window graphics, floor signage, POP, stickers, vehicle decals and apparel heat transfers. The VS-i also introduces a new function for fine adjustment of cutting positions, which minimises mistakes during the cutting process. Adjustments can be made by 0.01mm for more accurate cutting results. The optional media take-up unit (TU-2) also automatically collects Print & Cut graphics for unattended operation.

**Print  
& Cut**



You can cut graphics of virtually any shape



For short-run production of labels and stickers

# COLOURS

## Select the best ink configuration for your business

The new VS-i offers a choice of ink configurations, available in 8, 7 and 4 colours to suit your use and objectives, including white or metallic silver ink for producing value-added applications, and light black ink which is perfect for monochrome printing, and highly accurate colour reproduction.



8 Colours : CMYKLcLm + Light Black (Lk) + White (Wh)



8 Colours : CMYKLcLm + Light Black (Lk) + Metallic Silver (Mt)



8 Colours : CMYKLcLm + White (Wh) + Metallic Silver (Mt)



7 Colours : CMYKLcLm + Light Black (Lk) \*Must insert cleaning cartridge.



4 Colours : Double CMYK

## RIP & PRINT MANAGEMENT SOFTWARE *Roland VersaWorks®*

## Powerful yet easy to use Roland VersaWorks® RIP software

The VS-i series comes with Roland VersaWorks® RIP & print management software, which allows you to fully customise printer settings to meet unique job requirements. Increase the vividness of colours for high-impact outdoor signage, bring out every subtle detail in fine art or photographic reproductions for stunning results, or even manage advanced features such as variable data or clip and tile functions – all from a simple, user friendly interface. The VS-i series also supports built-in PANTONE® libraries that make it easy to match spot colours and reproduce them accurately. You can also replace spot colours with any colour included in the Roland Color System, Rolands' own library of more than 1,000 standard colours and 512 metallic shades.



# VersaCAMM



Specifications				
Model		VS-640i	VS-540i	VS-300i
Printing technology		Piezoelectric inkjet		
Media	Width	210 to 1,625 mm (8.3 to 64 in.)	210 to 1,371 mm (8.3 to 54 in.)	182 to 762 mm (7.2 to 30 in.)
	Thickness	Maximum 1.0 mm (39 mil) with liner, for printing    Maximum 0.4 mm (16 mil) with liner and 0.22 mm (9 mil) without liner, for cutting		
	Roll outer diameter	Maximum 210 mm (8.3 in.)		
	Roll weight	Max. 40 kg (88 lbs)	Max. 30 kg (66 lbs)	Max. 25 kg (55 lbs)
	Core diameter*1	76.2 mm (3 in.) or 50.8 mm (2 in.)		
Printing/cutting width*2		Max. 1,600 mm (63 in.)	Max. 1,346 mm (53 in.)	Max. 736 mm (29 in.)
Ink cartridges	Types	ECO-SOL MAX2 440-cc cartridge (cyan, magenta, yellow, black, light cyan, light magenta, and light black) ECO-SOL MAX2 220-cc cartridge (metallic silver and white)		
	Colours	Eight colours (cyan, magenta, yellow, black, light cyan, light magenta, light black, and white) or, Eight colours (cyan, magenta, yellow, black, light cyan, light magenta, light black, and metallic silver) or, Eight colours (cyan, magenta, yellow, black, light cyan, light magenta, metallic silver, and white) or, Seven colours (cyan, magenta, yellow, black, light cyan, light magenta, and light black) or, Four colours (cyan, magenta, yellow, and black)		
Printing resolution (dots per inch)		Maximum 1,440 dpi		
Cutting speed		10 to 300 mm/s		
Blade force		30 to 300 gf		
Cutting blade		Type: Roland CAMM-1 series compatible    Blade offset: 0.000 to 1.500 mm (0.000 to 0.059 in)		
Software resolution (when cutting)		0.025 mm/step		
Distance accuracy (when printing)**4		Error of less than ±0.3% of distance traveled, or ±0.3 mm, whichever is greater		
Distance accuracy (when cutting)**3		Error of less than ±0.4% of distance traveled, or ±0.3 mm, whichever is greater When distance correction has been performed (when the setting for [CUTTING MENU] - [CALIBRATION] has been made): Error of less than ±0.2% of distance traveled, or ±0.1 mm, whichever is greater		
Repeatability (when cutting)**5		±0.1 mm or less		
Alignment accuracy for printing and cutting**3,4		±0.5 mm or less		
Alignment accuracy for printing and cutting when reloading media**6,7		Error of less than ±0.5% of distance traveled, or ±3 mm, whichever is greater		
Media heating system**8	Print heater	Setting range for the preset temperature: 30 to 45°C (86 to 112°F)		
	Dryer	Setting range for the preset temperature: 30 to 50°C (86 to 122°F)		
Connectivity		Ethernet (10BASE-T/100BASE-TX, automatic switching)		
Power-saving function		Automatic sleep feature		
Power requirements		AC 100 to 120 V ±10%, 7.8 A, 50/60 Hz or AC 220 to 240 V ±10%, 4.0 A, 50/60 Hz	AC 100 to 120 V ±10%, 7.5 A, 50/60 Hz or AC 220 to 240 V ±10%, 3.8 A, 50/60 Hz	AC 100 to 120 V ±10%, 5.1 A, 50/60 Hz or AC 220 to 240 V ±10%, 2.6 A, 50/60 Hz
Power	During operation	Approx. 1,044 W	Approx. 995 W	Approx. 670 W
	Sleep mode	Approx. 14.5 W	Approx. 15.1 W	Approx. 14.4 W
Acoustic noise level		During operation: 69 dB (A) or less    During standby: 43 dB (A) or less		
Dimensions (with stand)		2,575 (W) x 795 (D) x 1,270 (H) mm (101.4 (W) x 31.1 (D) x 50 (H) in.)	2,315 (W) x 795 (D) x 1,270 (H) mm (91.1 (W) x 31.1 (D) x 50 (H) in.)	1,700 (W) x 795 (D) x 1,270 (H) mm (66.9 (W) x 31.1 (D) x 50 (H) in.)
Weight (with stand)		140 kg (309 lbs)	130 kg (287 lbs)	100 kg (220 lbs)
Environmental	Power on	Temperature: 15 to 32°C (59 to 90°F) (20°C [68°F] or more recommended, humidity: 35 to 80%RH (non-condensing)		
	Power off	Temperature: 5 to 40°C (41 to 104°F), humidity: 20 to 80%RH (non-condensing)		
Included items		Exclusive stands, power cord, blade, blade holder, media clamps, media holder, replacement blade for separating knife, User's Manual, etc.		

**About Metallic Silver and White Inks**

Due to the nature of white and silver inks, the pigment in these inks will settle in the cartridge and ink flow system, requiring you to shake the cartridge before each use. Outdoor durability is three years for CMYK inks, one year for white ink, and one to three years for metallic silver ink, depending on the media used. Roland strongly recommends lamination for both indoor and outdoor graphics to ensure the quality of metallic inks.

Roland reserves the right to make changes in specifications, materials or accessories without notice. Your actual output may vary. For optimum output quality, periodic maintenance to critical components may be required. Please contact your Roland dealer for details. No guarantee or warranty is implied other than expressly stated. Roland shall not be liable for any incidental or consequential damages, whether foreseeable or not, caused by defects in such products. Adobe, PostScript, PostScript 3 and the PostScript logo are trademarks of Adobe Systems Incorporated. PANTONE® is the property of Pantone LLC. All other trademarks are the property of their respective owners. Reproduction or use of copyrighted material is governed by local, national, and international laws. Customers are responsible for observing all applicable laws and are liable for any infringement. Roland DG Corp. has licensed the MMP technology from the TPL Group.

Options		
Model		Description
ECO-SOL MAX2 Ink	ESL4-4CY	Cyan, 440cc
	ESL4-4MG	Magenta, 440cc
	ESL4-4YE	Yellow, 440cc
	ESL4-4BK	Black, 440cc
	ESL4-4LC	Light cyan, 440cc
	ESL4-4LM	Light magenta, 440cc
	ESL4-4LK	Light black, 440cc
	ESL4-MT	Metallic silver, 220cc
Cleaning cartridge	ESL4-WH	White, 220cc
	ESL4-CL	Cleaning liquid, 1pc.
Blades	ZEC-U5025	For thick, reflective and fluorescent vinyl, as well as sign vinyl in general, 5pcs.
	ZEC-U5022	For sign vinyl in general, 2pcs.
Blade Holders	XD-CH2	Blade holder with blade extension adjuster, made of aluminium
	XD-CH3	Blade holder with blade extension adjuster, made of resin

Roland VersaWorks System Requirements	
Operating system	Windows® 7 Professional or Ultimate (32/64-bit); Windows Vista® Business/Ultimate (32/64-bit); Windows® XP Professional Service Pack 2 or later (32/64-bit)
CPU	Core™2 Duo, 2.0 GHz or faster recommended
RAM	2 GB or more recommended
Video card and monitor	A resolution of 1,280 x 1,024 or more recommended
Free hard-disk space	40 GB or more recommended
Hard-disk file system	NTFS format
Optical drive	DVD-ROM drive

\*Roland VersaWorks® is a 32-bit application, which runs on 64-bit Windows® with WoW64 (Windows 32-bit on Windows 64-bit).

\*\*1 The media holder of this machine is exclusively for media with a paper tube core inner diameter of 3 inches. To use a 2 inch media core, please use the optionally available media flanges.

\*\*2 The length of printing or cutting is subject to the limitations of the program.

\*\*3 Using Roland specified media, loaded correctly, temperature: 25°C (77°F), humidity: 50 %RH, all pinch rollers are used, 25 mm or more for both right and left margins and 35 mm or more front margin, excluding expansion or contraction of the media and all correction and adjustment functions of this machine have been made properly. Not assured when the print heater or dryer is used.

\*\*4 Using Roland specified media, print travel of 1m.

\*\*5 [PREFEED] menu item must be set to "ENABLE." Range for assured repetition accuracy: [64" inch model] media over 610 mm wide, and 4,000 mm long • media over 610 mm wide or less and 8,000 mm long. [54" inch model] for media with a width exceeding 610 mm: length 4,000 mm • For media with a width of 610 mm or less: length 8,000 mm. [30" model] length 3,000 mm.

\*\*6 Provided that media length is under 3,000 mm. Excluding possible shift caused by expansion/contraction of the media and/or by reloading the media.

\*\*7 Using Roland specified media, 64" and 54" models: data size: 1,000 mm in the media-feed direction, 1,600 mm in the carriage-movement direction. 54" model: data size: 1,000 mm in the media-feed direction, 1,346 mm in the carriage-movement direction. 30" model: data size: 1,000 mm in the media-feed direction, 736 mm in the carriage-movement direction.

No lamination. Automatic detection of crop marks at 4 points when media is reloaded. During cutting, [PREFEED] menu item must be set to "ENABLE." Excludes possible shift caused by expansion/contraction of the media and/or by reloading the media.

\*\*8 Warm-up is required after power up. This may require 5 to 20 minutes, depending on the operating environment. The preset temperature may fail to be reached depending on the ambient temperature and media width.

Option		
Automated take-up system		
		
TU2-64 [For VS-640i]		
TU2-54 [For VS-540i]		
TU2-30 [For VS-300i]	* Rolls up to 30kg (66 lbs.)	
Heater and blower		
		
OndS 640A/B [For VS-640i]	*It is recommended to use a heater and blower especially for printing with white and metallic.	
OndS 540A/B [For VS-540i]		
OndS 300A/B [For VS-300i]		
Power requirements		
OndS ***A : AC 100 to 115 V, 6 A, 50/60 Hz		
OndS ***B : AC 200 to 240 V, 3 A, 50/60 Hz		

Roland DG products that feature this environmental label meet the company's criteria for environmental consciousness, a set of standards based on ISO 14021 self-declaration type II. For more information, please visit [www.rolanddg.com](http://www.rolanddg.com).

